

**R13T**

Für alle Motoren mit einer Drehzahl,  
direkte Einschaltung oder YΔ-Anlauf

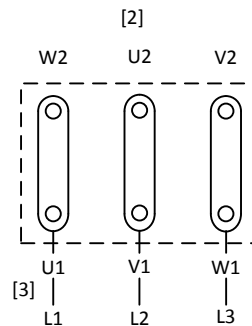
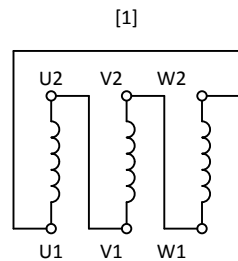
For all single-speed motors, direct  
on-line starting or star delta starting

Pour tous les moteurs mono vitesse,  
démarrage direct ou démarrage YΔ

**Niedere Spannung, Δ Schaltung**

**Low voltage, delta-connection**

**Basse tension, branchement Δ**

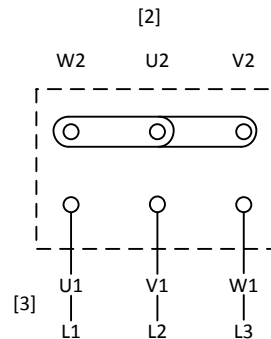
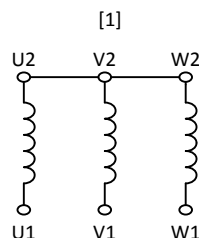


68 151 XX 06 01 01

**Hohe Spannung, Y-Schaltung**

**High voltage, star-connection**

**Haute tension, branchement Y**



68 151 XX 06 02 00

[1] Motorwicklung

[1] Motor winding

[1] Bobinage moteur

[2] Motorklemmenplatte

[2] Motor terminal board

[2] Plaque à bornes du moteur

[3] Zuleitungen

[3] Supply leads

[3] Alimentation

Drehrichtungsumkehr: Vertauschen  
von 2 Zuleitungen (L1-L2)

To reverse: Interchange 2 supply  
leads (L1-L2)

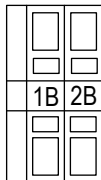
Changement du sens de rotation  
Inverser deux conducteurs  
d'alimentation (L1-L2)

Belegungsplan / Terminal assignment diagram / Affectation des bornes 66 000 xx 06 ML

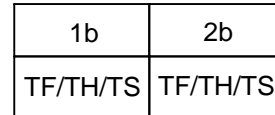
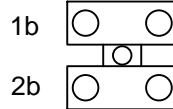
Motorschutz mit PTC-Widerstand (TF) oder Bimetallschalter (TH/TS)

Motor protection with PTC-resistance (TF) or bimetallic switch (TH/TS)

Protection du moteur par résistance PTC (TF) ou relais bilame (TH/TS)



oder/or/ou



68 151 XX 06 03 01

**alternativ**

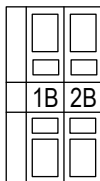
**alternative**

**alternatif**

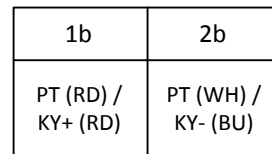
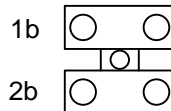
Thermische Motorinformation mit KTY84-130 (KY) oder PT100 (PT)

Thermal motor information with KTY84-130 (KY) or PT100 (PT)

Information thermique de moteur avec KTY84-130 (KY) ou PT100 (PT)



oder/or/ou



68 151 XX 06 04 01

BU blau / blue / bleu

RD rot / red / rouge

WH weiß / white / blanc

**alternativ**

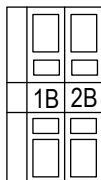
**alternative**

**alternatif**

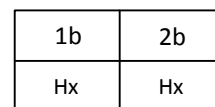
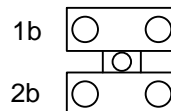
Stillstandsheizung

Heater

Préchauffage à l'arrêt



oder/or/ou



68 151 XX 06 05 01

BK : schwarz / black / noir  
 BN : braun / brown / brun  
 BU : blau / blue / bleu  
 GN : grün / green / vert-jaune  
 GY : grau / grey / gris  
 OG : orange / orange / orange  
 PK : rosa / pink / rose  
 RD : rot / red / rouge  
 VT : violett / violet / violet  
 WH : weiß / white / blanc  
 YE : gelb / yellow / jaune

TF : 100°C – RD  
 130°C – BU  
 150°C – BK  
 170°C – WH/GN

TH : 100°C – GN  
 130°C – YE  
 150°C – VT  
 170°C – BN

TS : 100°C – GN/BK  
 130°C – YE/BK  
 150°C – VT/BK  
 170°C – BN/BK

Hx : 230V ±10% - WH/OG  
 115V ±10% - WH/GY